

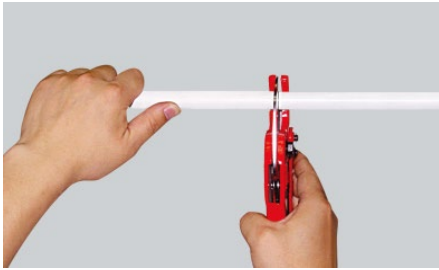
PEX System

# Installation Guide

**PEX-AL-PEX Tubing with F1 Compression Fitting**

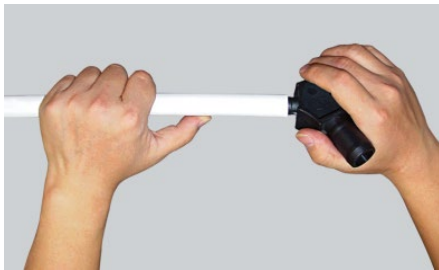
# Installation Guide

## PEX-AL-PEX Tubing with F1 Compression Fitting



### Step 1: Cutting the tubing

Using the RIIFO PEX tubing cutter, cut the tubing squarely with speed and precision.



### Step 2: Bevel

Round and bevel the endholes and make a no less than 2mm incline using the RIIFO plastic reamer



### Step 3: Insertion

Choose the correct size fitting for the tubing. Place the nut over the tubing. Slide the compression ring over the tubing. Ensure the mouth of the nut and the tubing face the same direction.



Push the fitting into the tubing up to the shoulder and take care not to damage the o-ring



### Step 4: Tighten

Use two wrenches to tighten the nut completely.

\*Test all completed connections in accordance with the local authority having jurisdiction

# RIIFO