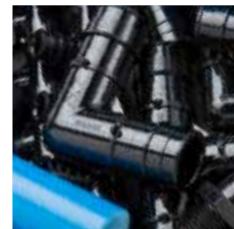
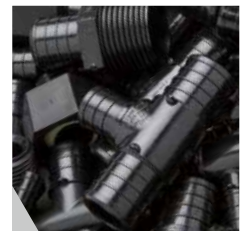


# RIIFO

[www.riifo.us](http://www.riifo.us)

# C O N T E N T S

|           |   |
|-----------|---|
| <b>2</b>  | <b>1. Company Overview</b>                  |
| 3         | ■ About RIIFO                               |
| <b>4</b>  | <b>2. PEX Tubing</b>                        |
| 5         | ■ PEX-b Tubing                              |
| 7         | ■ PEX-b Barrier Tubing                      |
| 8         | ■ PEX-a Tubing                              |
| 10        | ■ PEX-a Barrier Tubing                      |
| 11        | ■ PEX-AL-PEX Tubing                         |
| <b>12</b> | <b>3. PEX Fittings</b>                      |
| 13        | ■ Lead-Free Brass Crimp Fittings            |
| 18        | ■ Poly Alloy Fittings                       |
| 21        | ■ Lead-Free Brass Press Fittings            |
| 25        | ■ Lead-Free EcoBrass Expansion Fittings     |
| 28        | ■ Poly Alloy Expansion Fittings             |
| <b>30</b> | <b>4. Heating/Cooling Manifolds</b>         |
| 31        | ■ Stainless Steel Heating/Cooling Manifolds |
| 32        | ■ Brass Heating/Cooling Manifolds           |
| 33        | ■ Manifold Accessories                      |
| <b>37</b> | <b>5. Tools and Accessories</b>             |
| <b>40</b> | <b>6. Terms and Conditions</b>              |



A photograph of a modern, two-story office building with a light gray facade. The word "RIIFO" is mounted on the upper level in large, dark blue, three-dimensional letters. A horizontal band of textured, metallic-looking panels runs across the middle of the building. The ground floor features large glass windows and doors. A red diagonal line cuts across the lower right portion of the image. In the bottom right corner, the text "COMPANY OVERVIEW" and a large number "1" are displayed.

RIIFO

COMPANY  
OVERVIEW

1





## About RIIFO

RIIFO is headquartered in Buford, Georgia, a suburb of Atlanta, and currently has warehouse facilities in Buford, Kent, WA, and Phoenix, AZ. RIIFO is a wholly owned subsidiary of the Rifeng Enterprise Group Co., Ltd. Established in 1996, Rifeng is the technology pioneer and leading enterprise for the research and development, production, promotion and application of plastic piping systems for the plumbing and heating markets worldwide.

RIIFO currently provides a range of products including potable PEX-b tubing, PEX-a tubing, PEX-AL-PEX tubing, Oxygen Barrier tubing, Lead-free Brass Crimp fittings, Poly Alloy Crimp fittings, Lead-free Brass Press fittings, Lead-free Ecobrase Expansion fittings, Poly Alloy Expansion fittings, manifolds, tools, and accessories. Today, RIIFO utilizes over 12 million sq. ft. of ISO9001 manufacturing and testing facilities to produce our industry leading products.

With over 25 years of innovative industry experience and manufacturing history, RIIFO's success is driven by a strong focus to provide integrated system solutions which are both superiorly sustainable and highly cost-effective. RIIFO stands as a global leader in the plastics plumbing and heating solutions industry.



## RIIFO PEX Tubing

**PEX is an acronym for:** crosslinked high density polyethylene (HDPE) tubing. PEX tubing is created by melting HDPE and extruding it into continuous tubing to form a resilient, high performing product with impressive operating characteristics. Crosslinking HDPE causes the material to become stronger and resistant to cold temperature cracking or brittleness on impact while retaining its flexibility for efficient use in potable plumbing, radiant heating, and hydronic systems.

**RIIFO PEX tubing meets the standard of CSA B137.5, ASTM E84, ASTM 876, and ASTM 877.**

PEX-b Tubing  
PEX-b Barrier Tubing  
PEX-a Tubing  
PEX-a Barrier Tubing  
PEX-AL-PEX Tubing

P E X  
T U B I N G

2



# RIIFO PEX-b Tubing

## PEX-b Tubing Red Coils



| Size | Length | Part Number | Qty |
|------|--------|-------------|-----|
| 3/8" | 100'   | PXu38100R   | 1   |
| 3/8" | 300'   | PXu38300R   | 1   |
| 3/8" | 500'   | PXu38500R   | 1   |
| 3/8" | 1000'  | PXu381000R  | 1   |
| 1/2" | 100'   | PXu12100R   | 1   |
| 1/2" | 300'   | PXu12300R   | 1   |
| 1/2" | 500'   | PXu12500R   | 1   |
| 1/2" | 1000'  | PXu121000R  | 1   |
| 3/4" | 100'   | PXu34100R   | 1   |
| 3/4" | 300'   | PXu34300R   | 1   |
| 3/4" | 500'   | PXu34500R   | 1   |
| 1"   | 100'   | PXu1100R    | 1   |
| 1"   | 300'   | PXu1300R    | 1   |
| 1"   | 500'   | PXu1500R    | 1   |

## PEX-b Tubing Blue Coils



| Size | Length | Part Number | Qty |
|------|--------|-------------|-----|
| 3/8" | 100'   | PXu38100B   | 1   |
| 3/8" | 300'   | PXu38300B   | 1   |
| 3/8" | 500'   | PXu38500B   | 1   |
| 3/8" | 1000'  | PXu381000B  | 1   |
| 1/2" | 100'   | PXu12100B   | 1   |
| 1/2" | 300'   | PXu12300B   | 1   |
| 1/2" | 500'   | PXu12500B   | 1   |
| 1/2" | 1000'  | PXu121000B  | 1   |
| 3/4" | 100'   | PXu34100B   | 1   |
| 3/4" | 300'   | PXu34300B   | 1   |
| 3/4" | 500'   | PXu34500B   | 1   |
| 1"   | 100'   | PXu1100B    | 1   |
| 1"   | 300'   | PXu1300B    | 1   |
| 1"   | 500'   | PXu1500B    | 1   |

## PEX-b Tubing White Coils



| Size | Length | Part Number | Qty |
|------|--------|-------------|-----|
| 1/8" | 100'   | PXu18100W   | 1   |
| 1/4" | 100'   | PXu14100W   | 1   |
| 3/8" | 100'   | PXu38100W   | 1   |
| 3/8" | 300'   | PXu38300W   | 1   |
| 3/8" | 500'   | PXu38500W   | 1   |
| 3/8" | 1000'  | PXu381000W  | 1   |
| 1/2" | 100'   | PXu12100W   | 1   |
| 1/2" | 300'   | PXu12300W   | 1   |
| 1/2" | 500'   | PXu12500W   | 1   |
| 1/2" | 1000'  | PXu121000W  | 1   |
| 3/4" | 100'   | PXu34100W   | 1   |
| 3/4" | 300'   | PXu34300W   | 1   |
| 3/4" | 500'   | PXu34500W   | 1   |
| 1"   | 100'   | PXu1100W    | 1   |
| 1"   | 300'   | PXu1300W    | 1   |
| 1"   | 500'   | PXu1500W    | 1   |

# RIIFO PEX-b Tubing

## PEX-b Tubing Red Sticks



| Diameter | Length | Part Number | Qty | Bundle Length |
|----------|--------|-------------|-----|---------------|
| 1/2"     | *10'   | PXu1210R    | 60  | 600'          |
| 1/2"     | 20'    | PXu1220R    | 50  | 1000'         |
| 3/4"     | *10'   | PXu3410R    | 20  | 200'          |
| 3/4"     | 20'    | PXu3420R    | 20  | 400'          |
| 1"       | 20'    | PXu120R     | 15  | 300'          |

## PEX-b Tubing Blue Sticks



| Diameter | Length | Part Number | Qty | Bundle Length |
|----------|--------|-------------|-----|---------------|
| 1/2"     | *10'   | PXu1210B    | 60  | 600'          |
| 1/2"     | 20'    | PXu1220B    | 50  | 1000'         |
| 3/4"     | *10'   | PXu3410B    | 20  | 200'          |
| 3/4"     | 20'    | PXu3420B    | 20  | 400'          |
| 1"       | 20'    | PXu120B     | 15  | 300'          |

## PEX-b Tubing White Sticks



| Diameter | Length | Part Number | Qty | Bundle Length |
|----------|--------|-------------|-----|---------------|
| 1/2"     | *10'   | PXu1210W    | 60  | 600'          |
| 1/2"     | 20'    | PXu1220W    | 50  | 1000'         |
| 3/4"     | *10'   | PXu3410W    | 20  | 200'          |
| 3/4"     | 20'    | PXu3420W    | 20  | 400'          |
| 1"       | 20'    | PXu120W     | 15  | 300'          |
| 1-1/4"   | 20'    | PXu520W     | 10  | 200'          |
| 1-1/2"   | 20'    | PXu620W     | 8   | 160'          |
| 2"       | 20'    | PXu820W     | 5   | 100'          |

\*while supplies last

# Oxygen Barrier PEX Tubing

## Oxygen Barrier PEX-b Tubing Red Coils



| Size | Length | Part Number | Qty |
|------|--------|-------------|-----|
| 3/8" | 300'   | BPX38300    | 1   |
| 3/8" | 500'   | BPX38500    | 1   |
| 3/8" | 1000'  | BPX381000   | 1   |
| 1/2" | 100'   | BPX12100    | 1   |
| 1/2" | 300'   | BPX12300    | 1   |
| 1/2" | 500'   | BPX12500    | 1   |
| 1/2" | 1000'  | BPX121000   | 1   |
| 5/8" | 300'   | BPX58300    | 1   |
| 5/8" | 400'   | BPX58400    | 1   |
| 5/8" | 500'   | BPX58500    | 1   |
| 5/8" | 1000'  | BPX581000   | 1   |
| 3/4" | 100'   | BPX34100    | 1   |
| 3/4" | 300'   | BPX34300    | 1   |
| 3/4" | 500'   | BPX34500    | 1   |
| 3/4" | 1000'  | BPX341000   | 1   |
| 1"   | 300'   | BPX1300     | 1   |
| 1"   | 500'   | BPX1500     | 1   |

## Oxygen Barrier PEX-b Tubing Red Sticks



| Size | Length | Part Number | Qty | Bundle Length |
|------|--------|-------------|-----|---------------|
| 1/2" | 20'    | BPX1220     | 60  | 1200'         |
| 5/8" | 20'    | BPX5820     | 20  | 400'          |
| 3/4" | 20'    | BPX3420     | 20  | 400'          |
| 1"   | 20'    | BPX120      | 15  | 300'          |



# PEX-a Tubing

## PEX-a Tubing Red Coils



| Size | Length | Part Number | Qty |
|------|--------|-------------|-----|
| 1/2" | 100'   | PXa12100R   | 1   |
| 1/2" | 300'   | PXa12300R   | 1   |
| 1/2" | 500'   | PXa12500R   | 1   |
| 3/4" | 100'   | PXa34100R   | 1   |

## PEX-a Tubing Blue Coils



| Size | Length | Part Number | Qty |
|------|--------|-------------|-----|
| 1/2" | 100'   | PXa12100B   | 1   |
| 1/2" | 300'   | PXa12300B   | 1   |
| 1/2" | 500'   | PXa12500B   | 1   |
| 3/4" | 100'   | PXa34100B   | 1   |
| 3/4" | 300'   | PXa34300B   | 1   |
| 1"   | 100'   | PXa1100B    | 1   |

## PEX-a Tubing Natural Coils



| Size | Length | Part Number | Qty |
|------|--------|-------------|-----|
| 1/2" | 100'   | PXa12100N   | 1   |
| 1/2" | 300'   | PXa12300N   | 1   |
| 1/2" | 500'   | PXa12500N   | 1   |
| 3/4" | 100'   | PXa34100N   | 1   |
| 1"   | 100'   | PXa1100N    | 1   |
| 1"   | 300'   | PXa1300N    | 1   |

# PEX-a Tubing

## PEX-a Tubing Red Sticks



| Diameter | Length | Part Number | Qty | Bundle Length |
|----------|--------|-------------|-----|---------------|
| 1/2"     | 20'    | PXa1220R    | 50  | 1000'         |
| 3/4"     | 20'    | PXa3420R    | 20  | 400'          |

## PEX-a Tubing Blue Sticks



| Diameter | Length | Part Number | Qty | Bundle Length |
|----------|--------|-------------|-----|---------------|
| 1/2"     | 20'    | PXa1220B    | 50  | 1000'         |
| 3/4"     | 20'    | PXa3420B    | 20  | 400'          |
| 1"       | 20'    | PXa120B     | 15  | 300'          |

## PEX-a Tubing Natural Sticks



| Diameter | Length | Part Number | Qty | Bundle Length |
|----------|--------|-------------|-----|---------------|
| 1/2"     | 20'    | PXa1220N    | 50  | 1000'         |
| 3/4"     | 20'    | PXa3420N    | 20  | 400'          |
| 1"       | 20'    | PXa120N     | 15  | 300'          |

# PEX-a Barrier Tubing

## Oxygen Barrier PEX-a Tubing Red Coils



| Size | Length | Part Number | Qty |
|------|--------|-------------|-----|
| 1/2" | 300'   | BPXa12300   | 1   |
| 1/2" | 1000'  | BPXa121000  | 1   |
| 5/8" | 400'   | BPXa58400   | 1   |
| 5/8" | 1000'  | BPXa581000  | 1   |
| 3/4" | 300'   | BPXa34300   | 1   |
| 3/4" | 1000'  | BPXa341000  | 1   |
| 1"   | 300'   | BPXa1300    | 1   |





# PEX-AL-PEX Tubing

## PEX-AL-PEX Orange Coils



| Size | Length | Part Number | Qty |
|------|--------|-------------|-----|
| 1/2" | 250'   | PALPX12250  | 1   |
| 1/2" | 300'   | PALPX12300  | 1   |
| 1/2" | 500'   | PALPX12500  | 1   |
| 1/2" | 1000'  | PALPX121000 | 1   |
| 5/8" | 400'   | PALPX58400  | 1   |
| 3/4" | 300'   | PALPX34300  | 1   |
| 1"   | 250'   | PALPX1250   | 1   |

# RIIFO PEX Fittings

RIIFO crimp fittings are used for making connections to PEX tubing and manufactured to comply with ASTM F1807, F2159 and F877.

LEAD-FREE BRASS CRIMP FITTINGS

POLY ALLOY CRIMP FITTINGS

LEAD-FREE BRASS PRESS FITTINGS

LEAD-FREE ECO BRASS EXPANSION FITTINGS

POLY ALLOY EXPANSION FITTINGS

PEX  
FITTINGS

3

# RIIFO Lead-Free Brass Crimp Fittings

## Lead-Free Brass Crimp Couplings



| Size        | Part Number | Qty |
|-------------|-------------|-----|
| 3/8"        | BLFC38      | 25  |
| 1/2"        | BLFC12      | 25  |
| 1/2" x 3/8" | BLFC1238    | 25  |
| 3/4"        | BLFC34      | 25  |
| 3/4" x 1/2" | BLFC3412    | 25  |
| 5/8"        | BLFC58      | 25  |
| 1"          | BLFC1       | 10  |
| 1" x 3/4"   | BLFC134     | 10  |

## Lead-Free Brass Crimp Elbows



| Size        | Part Number | Qty |
|-------------|-------------|-----|
| 3/8"        | BLF9038     | 25  |
| 1/2"        | BLF9012     | 25  |
| 1/2" x 3/8" | BLF901238   | 25  |
| 5/8"        | BLF9058     | 25  |
| 3/4"        | BLF9034     | 25  |
| 3/4" x 1/2" | BLF903412   | 25  |
| 1"          | BLF901      | 10  |

## Lead-Free Brass Crimp Tees



| Size               | Part Number | Qty |
|--------------------|-------------|-----|
| 3/8"               | BLFT38      | 25  |
| 1/2"               | BLFT12      | 25  |
| 1/2" x 1/2" x 3/4" | BLFT121234  | 25  |
| 3/4"               | BLFT34      | 25  |
| 3/4" x 1/2" x 1/2" | BLFT341212  | 25  |
| 3/4" x 1/2" x 3/4" | BLFT341234  | 25  |
| 3/4" x 3/4" x 1/2" | BLFT343412  | 25  |
| 3/4" x 3/4" x 1"   | BLFT34341   | 10  |
| 1"                 | BLFT1       | 10  |
| 1" x 1/2" x 3/4"   | BLFT11234   | 10  |
| 1" x 1/2" x 1"     | BLFT1121    | 10  |
| 1" x 3/4" x 1/2"   | BLFT13412   | 10  |
| 1" x 3/4" x 3/4"   | BLFT13434   | 10  |
| 1" x 3/4" x 1"     | BLFT1341    | 10  |
| 1" x 1" x 1/2"     | BLFT1112    | 10  |
| 1" x 1" x 3/4"     | BLFT1134    | 10  |



## RIIFO Lead-Free Brass Crimp Fittings

### Polybutylene Crimp Coupling Kit



| Size | Part Number | Qty |
|------|-------------|-----|
| 1/2" | BLFPBA12    | 5   |
| 3/4" | BLFPBA34    | 5   |

### Lead-Free Brass Crimp Test Plugs



| Size | Part Number | Qty |
|------|-------------|-----|
| 3/8" | BLFTP38     | 25  |
| 1/2" | BLFTP12     | 25  |
| 5/8" | BLFTP58     | 25  |
| 3/4" | BLFTP34     | 25  |
| 1"   | BLFTP1      | 10  |

### Lead-Free Brass Crimp Male Threaded Adapters



| Size            | Part Number | Qty |
|-----------------|-------------|-----|
| 1/2" x 1/2" MPT | BLFMTA12    | 25  |
| 1/2" x 3/4" MPT | BLFMTA1234  | 25  |
| 3/4" x 3/4" MPT | BLFMTA34    | 25  |
| 3/4" x 1/2" MPT | BLFMTA3412  | 25  |
| 3/4" x 1" MPT   | BLFMTA341   | 10  |
| 1" x 1" MPT     | BLFMTA1     | 10  |
| 1" x 3/4" MPT   | BLFMTA134   | 10  |

## RIIFO Lead-Free Brass Crimp Fittings

### Lead-Free Brass Crimp Male Threaded Elbows



| Size            | Part Number | Qty |
|-----------------|-------------|-----|
| 1/2" x 1/2" MPT | BLFMT9012   | 25  |
| 1/2" x 3/4" MPT | BLFMT901234 | 25  |
| 3/4" x 3/4" MPT | BLFMT9034   | 25  |
| 1" x 3/4" MPT   | BLFMT90134  | 10  |

### Lead-Free Brass Crimp Female Threaded Adapters



| Size            | Part Number | Qty |
|-----------------|-------------|-----|
| 1/2" x 1/2" FPT | BLFFTA12    | 25  |
| 1/2" x 3/4" FPT | BLFFTA1234  | 25  |
| 5/8" x 1/2" FPT | BLFFTA5812  | 25  |
| 3/4" x 3/4" FPT | BLFFTA34    | 25  |
| 3/4" x 1/2" FPT | BLFFTA3412  | 25  |
| 3/4" x 1" FPT   | BLFFTA341   | 10  |
| 1" x 1" FPT     | BLFFTA1     | 10  |

### Lead-Free Brass Crimp Drop Ear Elbows



| Size            | Part Number | Qty |
|-----------------|-------------|-----|
| 3/8" x 1/2" FPT | BLFDE903812 | 10  |
| 1/2" x 1/2" FPT | BLFDE9012   | 10  |
| 1/2" x 3/4" FPT | BLFDE901234 | 10  |
| 3/4" x 1/2" FPT | BLFDE903412 | 10  |
| 3/4" x 3/4" FPT | BLFDE9034   | 10  |

# RIIFO Lead-Free Brass Crimp Fittings

## Lead-Free Brass Crimp Male Sweat Adapters



| Size               | Part Number | Qty |
|--------------------|-------------|-----|
| 3/8" x 1/2" COPPER | BLFMSA3812  | 25  |
| 1/2" x 1/2" COPPER | BLFMSA12    | 25  |
| 1/2" x 3/4" COPPER | BLFMSA1234  | 25  |
| 5/8" x 1/2" COPPER | BLFMSA5812  | 25  |
| 3/4" x 1/2" COPPER | BLFMSA3412  | 25  |
| 3/4" x 3/4" COPPER | BLFMSA34    | 25  |
| 3/4" x 1" COPPER   | BLFMSA341   | 10  |
| 1" x 1" COPPER     | BLFMSA1     | 10  |

## Lead-Free Brass Crimp Male Sweat Elbows



| Size               | Part Number | Qty |
|--------------------|-------------|-----|
| 1/2" x 1/2" COPPER | BLFMS9012   | 25  |
| 1/2" x 3/4" COPPER | BLFMS901234 | 25  |
| 5/8" x 3/4" COPPER | BLFMS905834 | 25  |
| 3/4" x 3/4" COPPER | BLFMS9034   | 25  |

## Lead-Free Brass Crimp Female Sweat Adapters



| Size               | Part Number | Qty |
|--------------------|-------------|-----|
| 3/8" x 1/2" COPPER | BLFFSA3812  | 25  |
| 1/2" x 1/2" COPPER | BLFFSA12    | 25  |
| 1/2" x 3/4" COPPER | BLFFSA1234  | 25  |
| 5/8" x 1/2" COPPER | BLFFSA5812  | 25  |
| 3/4" x 1/2" COPPER | BLFFSA3412  | 25  |
| 3/4" x 3/4" COPPER | BLFFSA34    | 25  |
| 3/4" x 1" COPPER   | BLFFSA341   | 10  |
| 1" x 1" COPPER     | BLFFSA1     | 10  |



# RIIFO Lead-Free Brass Crimp Fittings

## Lead-Free Brass Female Sweat Elbows



| Size               | Part Number | Qty |
|--------------------|-------------|-----|
| 1/2" x 1/2" COPPER | BLFFS9012   | 25  |
| 1/2" x 3/4" COPPER | BLFFS901234 | 25  |
| 3/4" x 1/2" COPPER | BLFFS903412 | 25  |
| 3/4" x 3/4" COPPER | BLFFS9034   | 25  |
| 1" x 1" COPPER     | BLFFS901    | 10  |

## Lead-Free Brass Full Port Ball Valves



| Size | Part Number | Qty |
|------|-------------|-----|
| 1/2" | PXBLFBV12   | 4   |
| 3/4" | PXBLFBV34   | 4   |
| 1"   | PXBLFBV1    | 4   |

# RIIFO Poly Alloy Crimp Fittings

## Poly Alloy Crimp Couplings



| Size        | Part Number | Qty |
|-------------|-------------|-----|
| 3/8"        | PPC38       | 50  |
| 1/2"        | PPC12       | 50  |
| 1/2" x 3/8" | PPC1238     | 50  |
| 3/4"        | PPC34       | 25  |
| 3/4" x 1/2" | PPC3412     | 25  |
| 1"          | PPC1        | 10  |
| 1" x 1/2"   | PPC112      | 10  |
| 1" x 3/4"   | PPC134      | 10  |

## Poly Alloy Crimp Elbows



| Size        | Part Number | Qty |
|-------------|-------------|-----|
| 3/8"        | PP9038      | 50  |
| 1/2"        | PP9012      | 50  |
| 3/4"        | PP9034      | 25  |
| 3/4" x 1/2" | PP903412    | 25  |
| 1"          | PP901       | 10  |

## Poly Alloy Crimp Tees



| Size               | Part Number | Qty |
|--------------------|-------------|-----|
| 3/8"               | PPT38       | 50  |
| 1/2"               | PPT12       | 50  |
| 1/2" x 1/2" x 3/4" | PPT121234   | 25  |
| 3/4"               | PPT34       | 25  |
| 3/4" x 1/2" x 1/2" | PPT341212   | 25  |
| 3/4" x 1/2" x 3/4" | PPT341234   | 25  |
| 3/4" x 3/4" x 1/2" | PPT343412   | 25  |
| 3/4" x 3/4" x 1"   | PPT34341    | 25  |
| 1"                 | PPT1        | 10  |
| 1" x 3/4" x 3/4"   | PPT13434    | 10  |
| 1" x 3/4" x 1"     | PPT1341     | 10  |
| 1" x 1" x 1/2"     | PPT1112     | 10  |
| 1" x 1" x 3/4"     | PPT1134     | 10  |

# RIIFO Poly Alloy Crimp Fittings

## Poly Alloy Crimp Multiport Tee



| Outlets | Size                           | Part Number | Qty |
|---------|--------------------------------|-------------|-----|
| 2       | OPEN END 3/4" x 1/2"           | PPM3412234  | 2   |
| 3       | OPEN END 3/4" x 1/2"           | PPM3412334  | 2   |
| 4       | OPEN END 3/4" x 1/2"           | PPM3412434  | 2   |
| 4       | BILATERAL OPEN END 3/4" x 1/2" | PPM3412434B | 2   |
| 6       | OPEN END 3/4" x 1/2"           | PPM3412634  | 2   |
|         |                                |             |     |
| 3       | CLOSED END 3/4" x 1/2"         | PPM3412300  | 2   |
| 4       | CLOSED END 3/4" x 1/2"         | PPM3412400  | 2   |
| 6       | CLOSED END 1" x 1/2"           | PPM1012600  | 2   |

## Poly Alloy Crimp Test Plugs



| Size | Part Number | Qty |
|------|-------------|-----|
| 3/8" | PPTP38      | 50  |
| 1/2" | PPTP12      | 50  |
| 3/4" | PPTP34      | 25  |
| 1"   | PPTP1       | 10  |

## Poly Alloy Crimp Male Threaded Adapters



| Size            | Part Number | Qty |
|-----------------|-------------|-----|
| 1/2" x 1/2" MPT | PPMTA12     | 50  |
| 1/2" x 3/4" MPT | PPMTA1234   | 25  |
| 3/4" x 3/4" MPT | PPMTA34     | 25  |
| 3/4" x 1/2" MPT | PPMTA3412   | 25  |
| 1" x 1" MPT     | PPMTA1      | 10  |

# RIIFO Poly Alloy Crimp Fittings

## Poly Alloy Crimp Male Threaded Elbows



| Size            | Part Number | Qty |
|-----------------|-------------|-----|
| 1/2" x 1/2" MPT | PPMT9012    | 50  |
| 3/4" x 1/2" MPT | PPMT903412  | 25  |
| 3/4" x 3/4" MPT | PPMT9034    | 25  |

## Poly Alloy Crimp Female Threaded Adapters



| Size            | Part Number | Qty |
|-----------------|-------------|-----|
| 1/2" x 1/2" FPT | PPFTA12     | 50  |
| 3/4" x 3/4" FPT | PPFTA34     | 25  |
| 1" x 1" FPT     | PPFTA1      | 25  |

## Poly Alloy Crimp Female Swivel Adapters



| Size                       | Part Number | Qty |
|----------------------------|-------------|-----|
| 1/2" PEX x 1/2" NPSM ELBOW | PPSW9012W   | 25  |
| 3/4" PEX x 3/4" NPSM ELBOW | PPSW9034H   | 25  |
| 1/2" PEX x 1/2" NPSM       | PPSWFA12W   | 25  |
| 1/2" PEX x 3/4" NPSM       | PPSWFA1234H | 25  |
| 3/4" PEX x 3/4" NPSM       | PPSWFA34H   | 25  |



# RIIFO Lead-Free Brass Press Fittings

## Lead-Free Brass Press Coupling



| Size            | Part Number | Qty |
|-----------------|-------------|-----|
| 3/8"            | XC38        | 25  |
| 1/2"            | XC12        | 25  |
| 1/2" x 3/8"     | XC1238      | 25  |
| 3/4"            | XC34        | 25  |
| 3/4" x 1/2"     | XC3412      | 25  |
| 1"              | XC1         | 10  |
| 1" x 3/4"       | XC134       | 10  |
| 1-1/4" x 1-1/4" | XC5         | 10  |
| 1-1/4" x 1"     | XC51        | 10  |
| 1-1/4" X 3/4"   | XC534       | 10  |
| 1-1/2" x 1-1/2" | XC6         | 10  |
| 1-1/2" x 1"     | XC61        | 10  |
| 1-1/2" x 3/4"   | XC634       | 10  |
| 1-1/2" x 1-1/4" | XC65        | 10  |
| 2" x 2"         | XC8         | 10  |
| 2" x 1-1/2"     | XC86        | 10  |

## Lead-Free Brass Press Tee



| Size                     | Part Number | Qty |
|--------------------------|-------------|-----|
| 1/2" x 1/2" x 1/2"       | XT12        | 25  |
| 1/2" x 1/2" x 3/4"       | XT121234    | 25  |
| 3/4" x 3/4" x 3/4"       | XT34        | 25  |
| 3/4" x 1/2" x 1/2"       | XT341212    | 25  |
| 3/4" x 1/2" x 3/4"       | XT341234    | 25  |
| 3/4" x 3/4" x 1/2"       | XT343412    | 25  |
| 1" x 1" x 1"             | XT1         | 10  |
| 1" x 1/2" x 1/2"         | XT11212     | 10  |
| 1" x 1/2" x 1"           | XT1121      | 10  |
| 1" x 3/4" x 1/2"         | XT13412     | 10  |
| 1" x 3/4" x 3/4"         | XT13434     | 10  |
| 1" x 3/4" x 1"           | XT1341      | 10  |
| 1" x 1" x 1/2"           | XT1112      | 10  |
| 1" x 1" x 3/4"           | XT1134      | 10  |
| 1-1/4"                   | XT5         | 10  |
| 1-1/4" x 1" x 3/4"       | XT5134      | 10  |
| 1-1/4" x 1" x 1"         | XT511       | 10  |
| 1-1/4" x 1-1/4" x 3/4"   | XT5534      | 10  |
| 1-1/4" x 1-1/4" x 1"     | XT551       | 10  |
| 1-1/2"                   | XT6         | 10  |
| 1-1/2" x 1" x 3/4"       | XT6134      | 10  |
| 1-1/2" x 1" x 1"         | XT611       | 10  |
| 1-1/2" x 1-1/2" x 3/4"   | XT6634      | 10  |
| 1-1/2" x 1-1/2" x 1"     | XT661       | 10  |
| 1-1/2" x 1-1/2" x 1-1/4" | XT665       | 10  |
| 2"                       | XT8         | 10  |
| 2" x 1-1/2" x 1"         | XT861       | 10  |
| 2" x 1-1/2" x 1-1/4"     | XT865       | 10  |

# RIIFO Lead-Free Brass Press Fittings

## Lead-Free Brass Press Elbow



| Size   | Part Number | Qty |
|--------|-------------|-----|
| 1/2"   | X9012       | 25  |
| 3/4"   | X9034       | 25  |
| 1"     | X901        | 10  |
| 1-1/4" | X905        | 10  |
| 1-1/2" | X906        | 10  |
| 2"     | X908        | 10  |

## Lead-Free Brass Press Test Plugs



| Size   | Part Number | Qty |
|--------|-------------|-----|
| 3/8"   | XTP38       | 25  |
| 1/2"   | XTP12       | 25  |
| 5/8"   | XTP58       | 25  |
| 3/4"   | XTP34       | 25  |
| 1"     | XTP1        | 10  |
| 1-1/4" | XTP5        | 10  |
| 1-1/2" | XTP6        | 10  |
| 2"     | XTP8        | 10  |

## Lead-Free Brass Press Male Threaded Adapters



| Size                | Part Number | Qty |
|---------------------|-------------|-----|
| 3/8" x 1/2" MPT     | XMTA3812    | 25  |
| 1/2" x 1/2" MPT     | XMTA12      | 25  |
| 1/2" x 3/4" MPT     | XMTA1234    | 25  |
| 3/4" x 3/4" MPT     | XMTA34      | 25  |
| 3/4" x 1/2" MPT     | XMTA3412    | 25  |
| 3/4" x 1" MPT       | XMTA341     | 10  |
| 3/4" x 1-1/4" MPT   | XMTA345     | 10  |
| 1" x 1" MPT         | XMTA1       | 10  |
| 1" x 3/4" MPT       | XMTA134     | 10  |
| 1" x 1-1/4" MPT     | XMTA15      | 10  |
| 1-1/4" x 1-1/4" MPT | XMTA5       | 10  |
| 1-1/2" x 1-1/2" MPT | XMTA6       | 10  |
| 2" x 2" MPT         | XMTA8       | 10  |

# RIIFO Lead-Free Brass Press Fittings

## Lead-Free Brass Press Male Threaded Elbows



| Size                | Part Number | Qty |
|---------------------|-------------|-----|
| 1/2" x 1/2" MPT     | XMT9012     | 25  |
| 1/2" x 3/4" MPT     | XMT901234   | 25  |
| 3/4" x 3/4" MPT     | XMT9034     | 25  |
| 3/4" x 1" MPT       | XMT90341    | 10  |
| 3/4" x 1-1/4" MPT   | XMT90345    | 10  |
| 1" x 1" MPT         | XMT901      | 10  |
| 1" x 1-1/4" MPT     | XMT9015     | 10  |
| 1-1/4" x 1-1/4" MPT | XMT905      | 10  |
| 1-1/2" x 1-1/2" MPT | XMT906      | 10  |
| 2" x 2" MPT         | XMT908      | 10  |

## Lead-Free Brass Press Female Threaded Adapters



| Size                | Part Number | Qty |
|---------------------|-------------|-----|
| 1/2" x 1/2" FPT     | XFTA12      | 25  |
| 1/2" x 3/4" FPT     | XFTA1234    | 25  |
| 3/4" x 3/4" FPT     | XFTA34      | 25  |
| 3/4" x 1/2" FPT     | XFTA3412    | 25  |
| 1" x 1" FPT         | XFTA1       | 10  |
| 1" x 3/4" FPT       | XFTA134     | 10  |
| 1-1/4" x 1-1/4" FPT | XFTA5       | 10  |
| 1-1/2" x 1-1/2" FPT | XFTA6       | 10  |
| 2" x 2" FPT         | XFTA8       | 10  |

## Lead-Free Brass Press Drop Ear Elbow



| Size            | Part Number | Qty |
|-----------------|-------------|-----|
| 1/2" x 1/2" FPT | XDE9012     | 10  |
| 3/4" x 3/4" FPT | XDE9034     | 10  |
| 3/4" x 1/2" FPT | XDE903412   | 10  |

# RIIFO Lead-Free Brass Press Fittings

## Lead-Free Brass Press Male Sweat Adapter



| Size            | Part Number | Qty |
|-----------------|-------------|-----|
| 1/2" x 1/2"     | XMSA12      | 25  |
| 1/2" x 3/4"     | XMSA1234    | 25  |
| 3/4" x 3/4"     | XMSA34      | 25  |
| 3/4" x 1/2"     | XMSA3412    | 25  |
| 3/4" x 1"       | XMSA341     | 10  |
| 1" x 1"         | XMSA1       | 10  |
| 1-1/4" x 1-1/4" | XMSA5       | 10  |
| 1-1/2" x 1-1/2" | XMSA6       | 10  |
| 2" x 2"         | XMSA8       | 10  |

## Lead-Free Brass Press Male Sweat Elbow



| Size        | Part Number | Qty |
|-------------|-------------|-----|
| 1/2" x 1/2" | XMS9012     | 25  |
| 1/2" x 3/4" | XMS901234   | 25  |
| 3/4" x 3/4" | XMS9034     | 25  |

## Lead-Free Brass Press Female Sweat Adapter



| Size            | Part Number | Qty |
|-----------------|-------------|-----|
| 3/8" x 1/2"     | XFSA3812    | 25  |
| 1/2" x 1/2"     | XFSA12      | 25  |
| 1/2" x 3/4"     | XFSA1234    | 25  |
| 3/4" x 1/2"     | XFSA3412    | 25  |
| 3/4" x 3/4"     | XFSA34      | 25  |
| 3/4" x 1"       | XFSA341     | 10  |
| 1" x 1"         | XFSA1       | 10  |
| 1-1/4" x 1-1/4" | XFSA5       | 10  |
| 1-1/2" x 1-1/2" | XFSA6       | 10  |
| 2" x 2"         | XFSA8       | 10  |

## Lead-Free Brass Press Female Sweat Elbow



| Size        | Part Number | Qty |
|-------------|-------------|-----|
| 1/2" x 3/4" | XFS901234   | 25  |
| 3/4" x 3/4" | XFS9034     | 25  |



# RIIFO Lead-Free EcoBrass Expansion Fittings

## Lead-Free EcoBrass Expansion Coupling



| Size | Part Number | Qty |
|------|-------------|-----|
| 1/2" | BEPC12      | 25  |
| 3/4" | BEPC34      | 25  |
| 1"   | BEPC1       | 10  |

## Lead-Free EcoBrass Expansion Drop Ear Elbow



| Size                | Part Number | Qty |
|---------------------|-------------|-----|
| 1/2" PEX x 1/2" FPT | BEPDE9012   | 25  |

## Lead-Free EcoBrass Expansion Elbow



| Size | Part Number | Qty |
|------|-------------|-----|
| 1/2" | BEP9012     | 25  |
| 3/4" | BEP9034     | 25  |
| 1"   | BEP901      | 10  |

# RIIFO Lead-Free EcoBrass Expansion Fittings

## Lead-Free EcoBrass Expansion Female Sweat Adapter



| Size        | Part Number | Qty |
|-------------|-------------|-----|
| 1/2" x 1/2" | BEPFSA12    | 25  |
| 3/4" x 3/4" | BEPFSA34    | 25  |

## Lead-Free EcoBrass Expansion Female Sweat Elbow



| Size        | Part Number | Qty |
|-------------|-------------|-----|
| 1/2" x 1/2" | BEPFS9012   | 25  |
| 3/4" x 3/4" | BEPFS9034   | 25  |

## Lead-Free EcoBrass Expansion Female Threaded Adapter



| Size                | Part Number | Qty |
|---------------------|-------------|-----|
| 1/2" PEX x 1/2" FPT | BEPFTA12    | 25  |
| 3/4" PEX x 3/4" FPT | BEPFTA34    | 25  |

## Lead-Free EcoBrass Expansion Male Sweat Adapter



| Size        | Part Number | Qty |
|-------------|-------------|-----|
| 1/2" x 1/2" | BEPMSA12    | 25  |
| 3/4" x 3/4" | BEPMSA34    | 25  |

# RIIFO Lead-Free EcoBrass Expansion Fittings

## Lead-Free EcoBrass Expansion Male Sweat Elbow



| Size        | Part Number | Qty |
|-------------|-------------|-----|
| 1/2" x 1/2" | BEPMS9012   | 25  |
| 3/4" x 3/4" | BEPMS9034   | 25  |

## Lead-free EcoBrass Expansion Male Threaded Adapter



| Size            | Part Number | Qty |
|-----------------|-------------|-----|
| 1/2" PEX x 1/2" | BEPMTA12    | 25  |
| 3/4" PEX x 3/4" | BEPMTA34    | 25  |

## Lead-free EcoBrass Expansion Male Threaded Elbow



| Size            | Part Number | Qty |
|-----------------|-------------|-----|
| 1/2" PEX x 1/2" | BEPMT9012   | 25  |
| 3/4" PEX x 3/4" | BEPMT9034   | 25  |

## Lead-free EcoBrass Expansion Tee



| Size               | Part Number | Qty |
|--------------------|-------------|-----|
| 1/2"               | BEPT12      | 25  |
| 3/4"               | BEPT34      | 25  |
| 3/4" x 1/2" x 1/2" | BEPT341212  | 25  |
| 3/4" x 1/2" x 3/4" | BEPT341234  | 25  |
| 3/4" x 3/4" x 1/2" | BEPT343412  | 25  |

# RIIFO Poly Alloy Expansion Fittings

## Poly Alloy Expansion Coupling



| Size        | Part Number | Qty |
|-------------|-------------|-----|
| 1/2"        | EPC12       | 50  |
| 3/4"        | EPC34       | 25  |
| 3/4" x 1/2" | EPC3412     | 50  |
| 1"          | EPC1        | 20  |
| 1" x 3/4"   | EPC134      | 25  |

## Poly Alloy Expansion Elbow



| Size       | Part Number | Qty |
|------------|-------------|-----|
| 1/2"       | EP9012      | 50  |
| 3/4"       | EP9034      | 25  |
| 3/4"x 1/2" | EP903412    | 25  |
| 1"         | EP901       | 20  |

## Poly Alloy Expansion Female Swivel Adapter



| Size            | Part Number | Qty |
|-----------------|-------------|-----|
| 1/2" PEX x 1/2" | EPSW9012W   | 25  |
| 1/2" PEX x 1/2" | EPSWFA12W   | 25  |

## Poly Alloy Expansion Male Threaded Adapter



| Size            | Part Number | Qty |
|-----------------|-------------|-----|
| 1/2" PEX x 1/2" | EPMTA12     | 50  |
| 1/2" PEX x 3/4" | EPMTA1234   | 25  |
| 3/4" PEX x 3/4" | EPMTA34     | 50  |
| 3/4" PEX x 1/2" | EPMTA3412   | 25  |
| 1" PEX x 1"     | EPMTA1      | 50  |



# RIIFO Poly Alloy Expansion Fittings

## Poly Alloy Expansion Manifold



| Size                                | Part Number | Qty |
|-------------------------------------|-------------|-----|
| OUTLETS: 2; 3/4" x 1/2", OPEN END   | EPM3412234  | 20  |
| OUTLETS: 3; 3/4" x 1/2", OPEN END   | EPM3412334  | 20  |
| OUTLETS: 4; 3/4" x 1/2", OPEN END   | EPM3412434  | 20  |
| OUTLETS: 6; 3/4" x 1/2", OPEN END   | EPM3412634  | 20  |
| OUTLETS: 2; 3/4" x 1/2", CLOSED END | EPM3412200  | 20  |
| OUTLETS: 3; 3/4" x 1/2", CLOSED END | EPM3412300  | 20  |
| OUTLETS: 4; 3/4" x 1/2", CLOSED END | EPM3412400  | 10  |
| OUTLETS: 6; 3/4" x 1/2", CLOSED END | EPM1012600  | 10  |

## Poly Alloy Expansion Plug



| Size | Part Number | Qty |
|------|-------------|-----|
| 1/2" | EPTP12      | 100 |
| 3/4" | EPTP34      | 50  |
| 1"   | EPTP1       | 50  |

## Poly Alloy Expansion Tee



| Size               | Part Number | Qty |
|--------------------|-------------|-----|
| 1/2"               | EPT12       | 50  |
| 1/2" x 1/2" x 3/4" | EPT121234   | 25  |
| 3/4"               | EPT34       | 25  |
| 3/4" x 1/2" x 1/2" | EPT341212   | 20  |
| 3/4" x 1/2" x 3/4" | EPT341234   | 20  |
| 3/4" x 3/4" x 1/2" | EPT343412   | 20  |
| 3/4" x 3/4" x 1"   | EPT34341    | 20  |
| 1"                 | EPT1        | 10  |
| 1" x 3/4" x 3/4"   | EPT13434    | 20  |
| 1" x 3/4" x 1"     | EPT1341     | 10  |
| 1" x 1" x 1/2"     | EPT1112     | 10  |
| 1" x 1" x 3/4"     | EPT1134     | 10  |



STAINLESS STEEL HEATING /  
COOLING MANIFOLDS

BRASS HEATING / COOLING  
MANIFOLDS

MANIFOLD ACCESSORIES

4

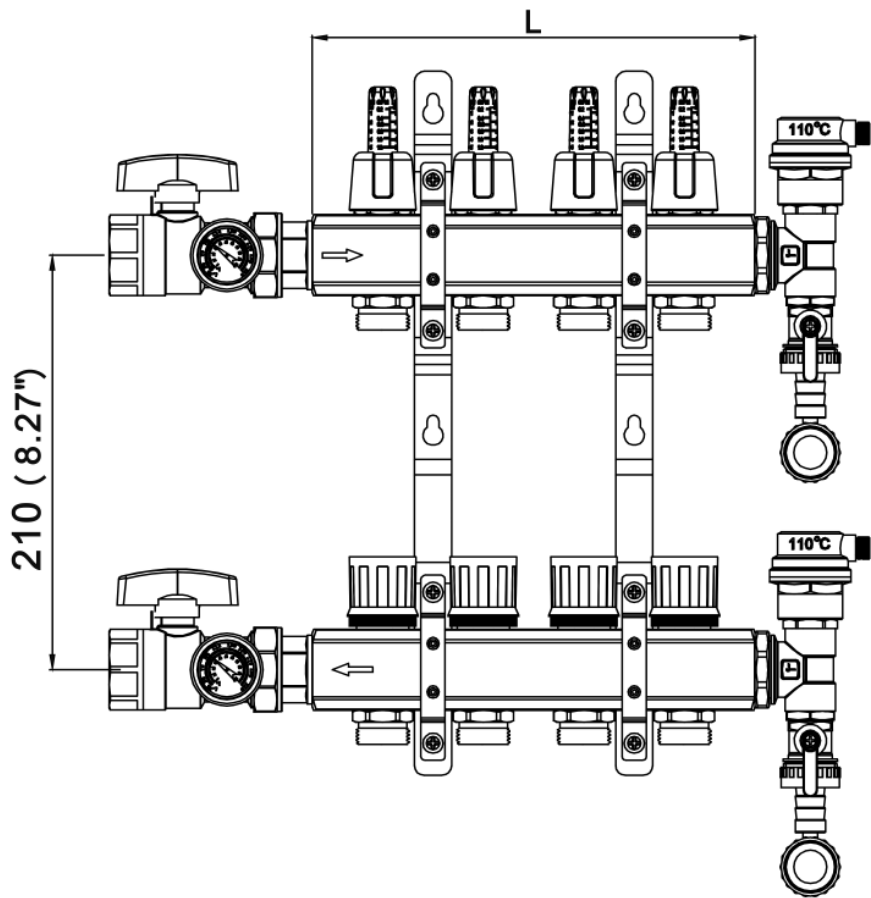
HEATING / COOLING  
MANIFOLDS

# Stainless Steel Heating/Cooling Manifolds

## RIIFO FN16 Manifold

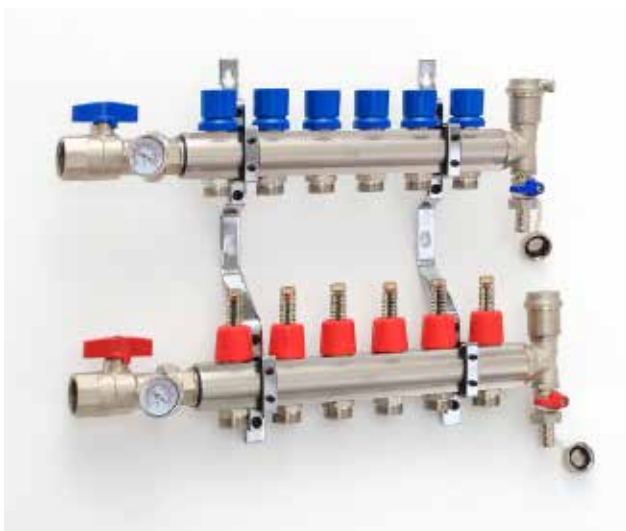


| Size | Length | Part Number | Branches |
|------|--------|-------------|----------|
| 3/4" | 6.10"  | FN16HMSS2   | 2        |
| 3/4" | 8.07"  | FN16HMSS3   | 3        |
| 3/4" | 10.04" | FN16HMSS4   | 4        |
| 3/4" | 12.01" | FN16HMSS5   | 5        |
| 3/4" | 13.98" | FN16HMSS6   | 6        |
| 3/4" | 15.94" | FN16HMSS7   | 7        |
| 3/4" | 17.91" | FN16HMSS8   | 8        |
| 3/4" | 19.88" | FN16HMSS9   | 9        |
| 3/4" | 21.85" | FN16HMSS10  | 10       |
| 3/4" | 23.82" | FN16HMSS11  | 11       |
| 3/4" | 25.79" | FN16HMSS12  | 12       |

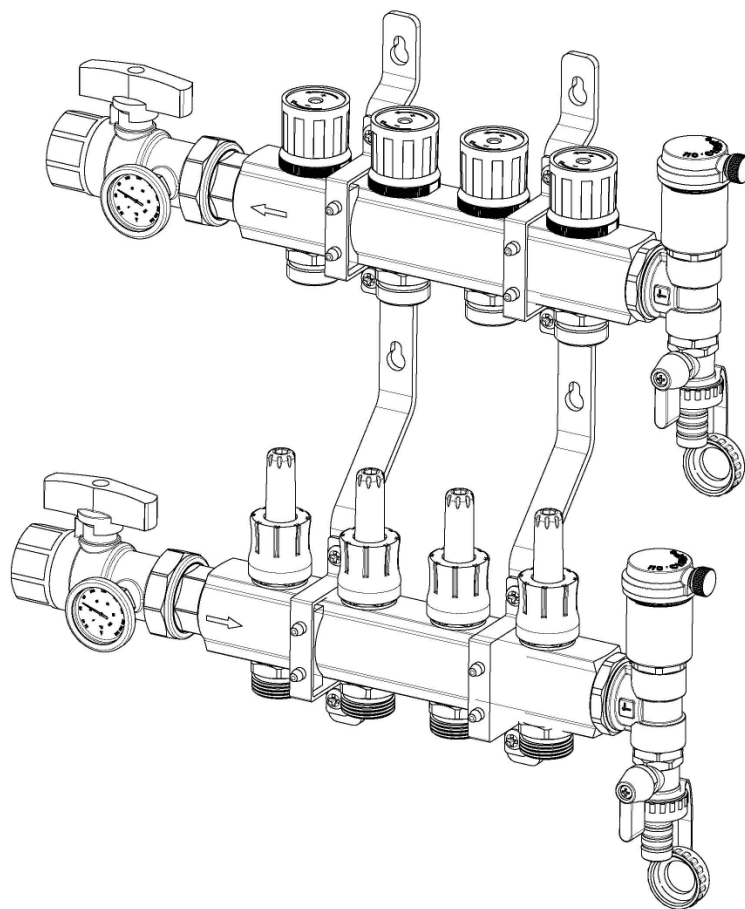


# Brass Heating/Cooling Manifolds

## RIIFO FN9 Manifold



| Size | Part Number | Branches |
|------|-------------|----------|
| 3/4" | FN9HMB2     | 2        |
| 3/4" | FN9HMB3     | 3        |
| 3/4" | FN9HMB4     | 4        |
| 3/4" | FN9HMB5     | 5        |
| 3/4" | FN9HMB6     | 6        |
| 3/4" | FN9HMB7     | 7        |
| 3/4" | FN9HMB8     | 8        |
| 3/4" | FN9HMB9     | 9        |
| 3/4" | FN9HMB10    | 10       |
| 3/4" | FN9HMB11    | 11       |
| 3/4" | FN9HMB12    | 12       |





## Manifold Accessories

### Manifold Compression Adapter for PEX tubing



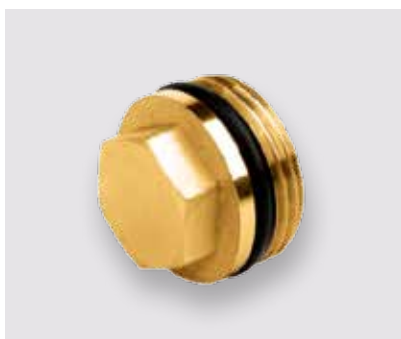
| Size        | Part Number | Qty |
|-------------|-------------|-----|
| 3/8" x 3/4" | APT3834     | 6   |
| 1/2" x 3/4" | APT1234     | 6   |
| 5/8" x 3/4" | APT5834     | 6   |
| 3/4" x 3/4" | APT34       | 6   |

### Manifold Compression Adapter for PEX-AL-PEX tubing



| Size        | Part Number | Qty |
|-------------|-------------|-----|
| 3/8" x 3/4" | APAP3834    | 6   |
| 1/2" x 3/4" | APAP1234    | 6   |
| 5/8" x 3/4" | APAP5834    | 6   |
| 3/4" x 3/4" | APAP34      | 6   |
| 1" x 3/4"   | APAP134     | 6   |

### Manifold End Plug



| Size | Part Number | Qty |
|------|-------------|-----|
| 1"   | EP1         | 2   |

### Manifold Male Cap



| Size | Part Number | Qty |
|------|-------------|-----|
| 1"   | MC1         | 2   |

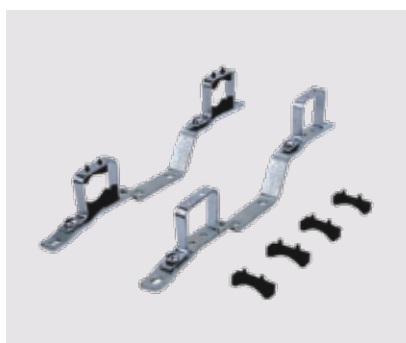
## Manifold Accessories

### Manifold Female Cap



| Size | Part Number | Qty |
|------|-------------|-----|
| 3/4" | FC34        | 2   |

### Manifold Bracket



| Part Number | Qty    |
|-------------|--------|
| BBHM        | 1 Pair |

### Manifold-Manifold Adapter



| Part Number | Qty   |
|-------------|-------|
| BLFMMAPT1   | 1 Set |

### Manifold End Piece with Drain Set



| Part Number | Qty   |
|-------------|-------|
| HMDS        | 1 Set |

## Manifold Accessories

### Manifold Ball Valve with Temperature Gauge



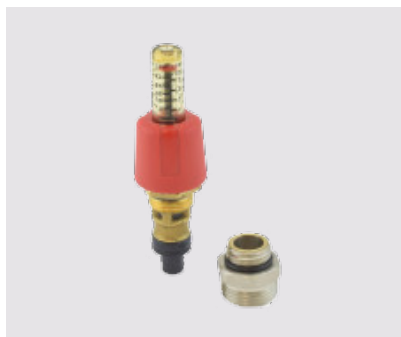
| Color | Part Number | Qty | Description |
|-------|-------------|-----|-------------|
| Red   | HM90BVR     | 1   | Angled      |
| Blue  | HM90BVB     | 1   | Angled      |
| Red   | HMBVR       | 1   | Straight    |
| Blue  | HMBVB       | 1   | Straight    |

### Manifold Auto Air Vent



| Description | Part Number | Qty |
|-------------|-------------|-----|
| Assembly    | FNHMAV      | 1   |
| Cap         | FNHMAVC     | 1   |

### Manifold Flow Meter



| Description | Part Number | Qty |
|-------------|-------------|-----|
| Assembly    | FNHMFV      | 1   |

### Manifold Actuated Return Valve



| Description | Part Number | Qty |
|-------------|-------------|-----|
| Assembly    | FNHMARV     | 1   |
| Cap         | FNHMARVC    | 1   |

# Manifold Accessories

## Powered Actuator for FN Heating Manifolds



| Description | Part Number | Qty |
|-------------|-------------|-----|
| 4 WIRE      | 4WA         | 2   |
| 2 WIRE      | 2WA         | 3   |



5

TOOLS AND  
ACCESSORIES



# Tools and Accessories

## Tubing Cutters



| Size      | Part Number | Qty |
|-----------|-------------|-----|
| 1/2"-3/4" | PTSC1       | 1   |

## PEX-AL-PEX Tubing Reamers



| Size           | Part Number | Qty |
|----------------|-------------|-----|
| 1/2", 3/4", 1" | PAPR12341   | 1   |
| 5/8", 3/4", 1" | PAPR58341   | 1   |

## Crimp Rings



| Size | Part Number | Qty |
|------|-------------|-----|
| 3/8" | PCCR38      | 100 |
| 1/2" | PCCR12      | 100 |
| 5/8" | PCCR58      | 50  |
| 3/4" | PCCR34      | 50  |
| 1"   | PCCR1       | 50  |

## Stainless Steel Sleeves



| Size | Part Number | Qty |
|------|-------------|-----|
| 1/2" | PSSS12      | 100 |
| 3/4" | PSSS34      | 100 |
| 1"   | PSSS1       | 50  |

## Cinch Clamp



| Size | Part Number | Qty |
|------|-------------|-----|
| 3/8" | PCC38       | 100 |
| 1/2" | PCC12       | 100 |
| 5/8" | PCC58       | 50  |
| 3/4" | PCC34       | 50  |
| 1"   | PCC1        | 50  |
| 3/8" | OTKR38      | 100 |
| 1/2" | OTKR12      | 100 |
| 5/8" | OTKR58      | 50  |
| 3/4" | OTKR34      | 50  |
| 1"   | OTKR1       | 50  |

# Tools and Accessories

## Hand Clamp Cutter Tool (3/8" - 1")



| Part Number | Description                        | Qty |
|-------------|------------------------------------|-----|
| OTKRPRT     | 3 handle<br>Pincer Ratchet<br>Tool | 1   |
| OTKRCCT     | Hand Clamp<br>Cutter Tool          | 1   |

## PEX Expansion Rings



| Size | Part Number | Qty |
|------|-------------|-----|
| 1/2" | EPR12       | 100 |
| 3/4" | EPR34       | 100 |
| 1"   | EPR1        | 50  |

# RIIFO

## Terms and Conditions

The following standard Terms and Conditions apply to all sales of products by RIIFO North America, Inc unless otherwise modified in Order Confirmation or Delivery Note. Any contrary terms in purchase orders or purchaser standard terms and conditions are rejected and acceptance of the order by RIIFO North America, Inc is conditioned upon these terms and conditions or as set out specifically in the RIIFO order confirmation.

**Terms of Payment:** Terms are net 30 days. Payable in U.S. dollars

**Price Changes:** All published prices are subject to change. Reasonable notice (normally 30 days or more) of an effective date for price changes shall be given. However, RIIFO reserves the right to give shorter notice if necessary.

**Sales Orders:** Purchase orders submitted to RIIFO shall specify RIIFO part numbers as well as product description from a RIIFO catalog. All such offers to purchase are subject to RIIFO North America, Inc acceptance, which shall be by order confirmation provided to the customer by RIIFO. Customer is responsible for reviewing the order confirmation and reporting any necessary changes to RIIFO Customer Service immediately. Mistakes on orders due to inaccurate or incomplete information from the customer and not changed by the customer will be the customer's responsibility and/or subject to RIIFO's return policy.

**Terms of Shipment:** Freight is paid by RIIFO North America, Inc for orders containing the following product and net values:.

- \$5,000 net for orders of straight length PEX only
- \$5,000 net for orders with pallet items only (includes fittings, coils, manifolds and combination of)
- \$7,500 net for mixed orders of straight length PEX and pallet items with a minimum of \$5,000 net in straight lengths

Excess freight charges resulting from special requested routing or specifying non-RIIFO North America, Inc designated common carriers will be billed to the customer.

**Restrictions:** Orders from U.S. customers with a "Ship to" Canada location will not be accepted and U.S. customers are not authorized to sell product to Canada.

**Freight Delivery and Risk of Loss in Transit:** All prices are FOB shipment point.

**Returns:** All returns are subject to RIIFO's return policy. No material may be returned without our written permission and return material authorization (RMA) number. Any items with a purchase date older than one year will not be allowed for return. We will accept cataloged and resalable items only. No returns will be allowed for broken bags or bundles, items outside of original packaging, discontinued, damaged, custom, or special order merchandise. Any material which is authorized to be returned will be subject to a minimum twenty-five percent (25%) restocking fee.

# RIIFO

**1650 Horizon Parkway NE Suite 100, Buford, GA 30518**

**1-833-GORIIFO**

*All products offered are subject to availability.*

Copyright (c) 2022 by RIIFO